

ZD-QJY3.0S *In-ground Scissor Car lift*

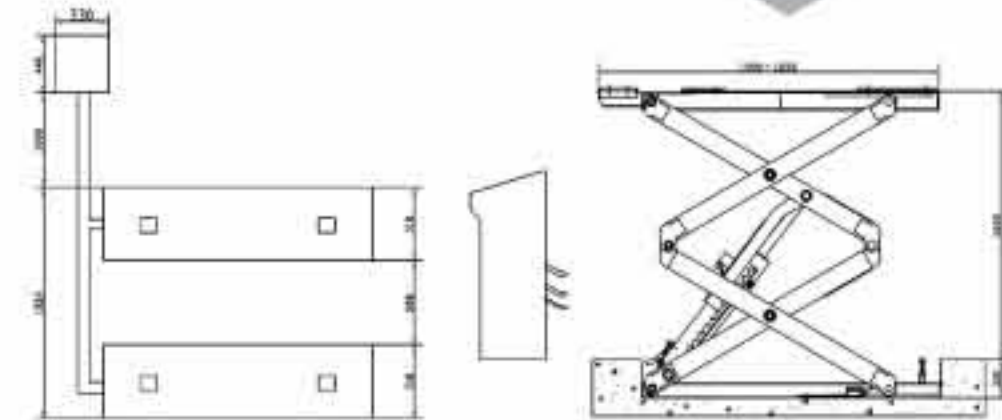
Features

- Convenient for tyre service and other repairings of vehicle.
- Length of platform adjustable for different vehicles.
- Mechanical protection device unlocked pneumatically, provides safety and simple operations.
- Synchronized moving of platforms.
- In-ground installation, save spaces and convenient for drive through.

ZD-QJY3.0S-1 with Italian pump station, Chinese hydraulic cylinder.

ZD-QJY3.0S-2 with Chinese pump station, Chinese hydraulic cylinder.

(Italian cylinder optional)



Technical data

Lifting capacity	3000kg	Net weight	850Kg
Lifting height	1600mm	Motor power	3kw
Min. height	1500-1650mm	Power supply	380v,220v
Raising time	≤ 66s		
Lowering time	≤ 45s		